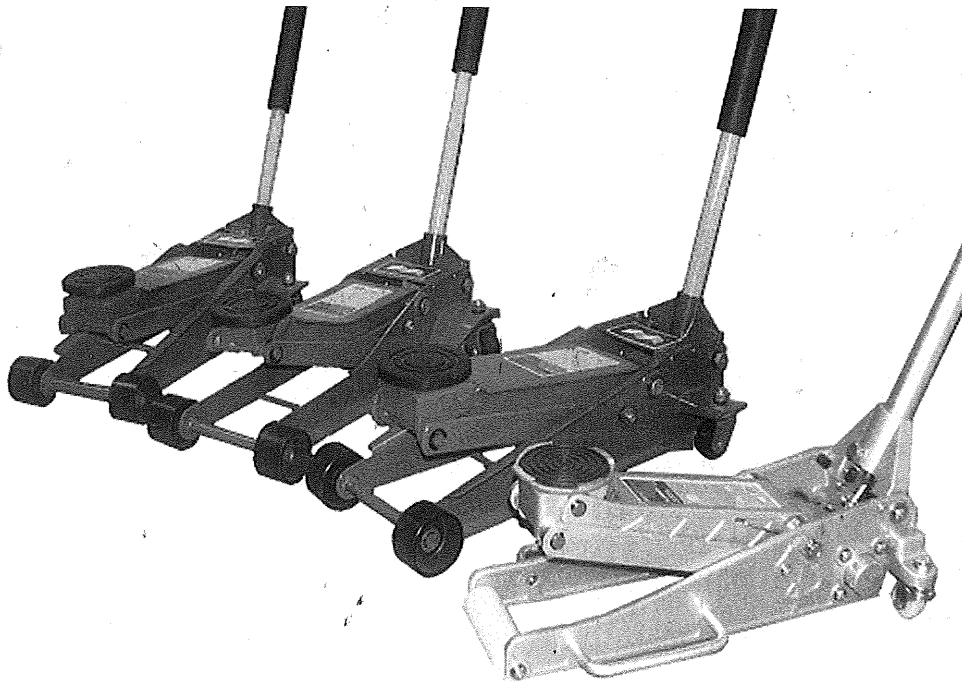




OWNER' S MANUAL

HYDRAULIC GARAGE JACK



NO. Y420300: 3 TON

NO.: Y420302: 3 TON

NO.: Y420303: 3TON

NO.: Y420225:2.5TON

NO.: Y422500: 2.5
TON

NO.: Y422501:2.5
TON

NO.: Y421350: 3,000
LB(1,350KG)

WARNING

Read the instructions and safety warnings before operating the jack. Failure to heed the instructions and safety warnings may result in personal injury or property damages.



Gaither Tool Company

2255 W. Morton Ave., Jacksonville, IL 62650

THIS OWNER'S MANUAL CONTAINS IMPORTANT DETAILS CONCERNING SAFE OPERATIONS OF THIS LIFTING DEVICE. THE USER MUST READ AND UNDERSTAND THESE DETAILS BEFORE ANY USE OF THE DEVICE. THIS MANUAL MUST BE RETAINED FOR FUTURE REFERENCE.

OWNER/ USER RESPONSIBILITY

The owner and/or the operator shall study the product instructions and retain them for future reference.

The owner and/or the operator shall have an understanding of the product operating instructions and warnings before operating the jack.

Warning information shall be emphasized and understood. If the operator is not fluent in English, the product instructions and warnings shall be read to and discussed with the operator in the operator's native language by the purchaser/owner or his designee, making sure that the operator comprehends its contents.

INSPECTION

Visual inspection should be made before each use of the jack. The inspector should check for abnormal conditions such as cracked weld, leaks, and damage, loose or missing parts.

Any jack that appears to be damaged in any way or is found to be worn or operated abnormally must be removed from the service immediately.

Any jack found abnormal shall be removed from the service until it is repaired by a qualified service center.

If the jack is accidentally subject to an abnormal load or shock, it must be taken out of the service immediately and be inspected by a qualified service center.

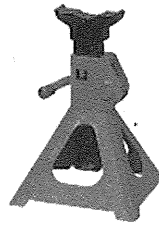
It is recommended that an annual inspection is performed on the jack and that any damaged or worn parts, decals or warning labels be replaced with manufacturer's specified parts.

ALTERATION

Because of potential hazards associated with this type of equipment, no alterations shall be made to the product.



WARNING



FOR YOUR SAFETY AND TO PREVENT INJURY:

Use the jack for lifting purposes **ONLY**.

Always support the vehicle with jack stands.



WARNING

THIS IS A LIFTING DEVICE ONLY. DO NOT MOVE OR DOLLY THE VEHICLE WHILE ON THE JACK. AFTER LIFTING, SUPPORT THE VEHICLE WITH APPROPRIATE MEANS IMMEDIATELY.

DO NOT EXCEED RATED CAPACITY. OVERLOADING CAN CAUSE DAMAGE TO OR FAILURE OF THE JACK.

LIFT ONLY ON AREAS OF THE VEHICLE AS SPECIFIED BY THE VEHICLE MANUFACTURER.

CENTER LOAD ON SADDLE PRIOR TO LIFTING. OFF-CENTER LOADS MAY CAUSE DAMAGE TO JACK, LOSS OF LOAD, PROPERTY DAMAGE, PERSONAL OR FATAL INJURY.

THIS JACK IS DESIGNED FOR USE ONLY ON HARD LEVEL SURFACES CAPABLE OF SUSTAINING THE LOAD. USE ON OTHER THAN HARD LEVEL SURFACES CAN RESULT IN JACK INSTABILITY AND POSSIBLE LOSS OF LOAD.

NO ALTERATIONS TO THE JACK SHALL BE MADE.

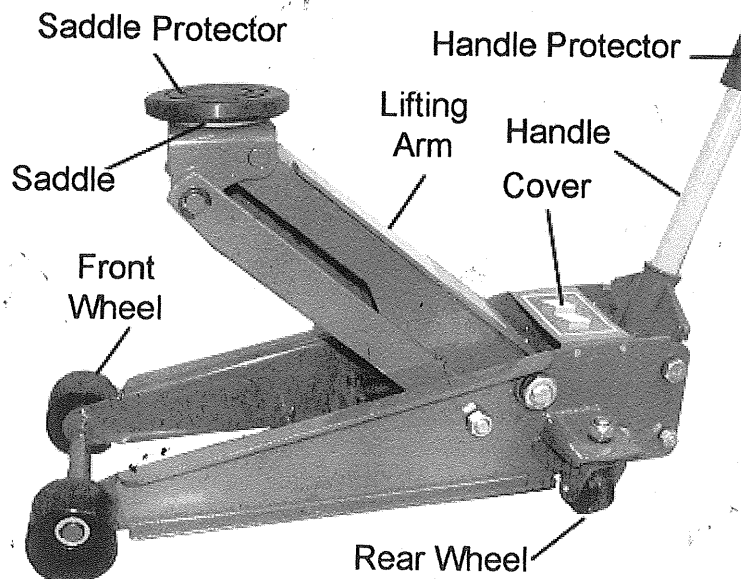
READ, STUDY AND UNDERSTAND THE OPERATING MANUAL PACKED WITH THIS JACK BEFORE OPERATING.

FAILURE TO HEED THESE WARNINGS MAY RESULT IN LOSS OF LOAD, DAMAGE TO JACK, AND/OR FAILURE RESULTING IN PROPERTY DAMAGE, PERSONAL OR FATAL INJURY.

Save these instructions. For your safety and the safety of others around you, read carefully before attempting to assemble, service or use your jack. Observe all safety and warning information. Always wear safety glasses when operating this product. Failure to comply with the information provided with this manual may result in severe, even fatal injury and/or property damages.

PRODUCT DESCRIPTION

The hydraulic jack is designed for lifting, but not sustaining loads within its rated capacity. After lifting, loads must be immediately supported by appropriate means. These models are not recommended for use in lifting or positioning houses and/or other building structure. These jacks comply with applicable ASME/ANSI standards.



BEFORE USE

1. Verify that the product and the application are compatible, check with your local service centers if in doubt.
2. Before using this product, read the owner's manual completely and familiarize yourself thoroughly with the product and the hazards associated with its improper use.
3. Open the release valve by turning it counter-clockwise but no more than 2 full turns.
4. With the ram fully retracted, locate and remove the oil filler plug. Insert the handle into the handle fork, then pump the handle 6 to 8 strokes. This will help release any pressurized air which may be trapped within the reservoir. Ensure the oil level is around 0.2" below the oil filler plug. Reinstall the oil filler plug.
5. Check to ensure that the jack moves freely (if so equipped) and that the pump operates smoothly before putting the jack into service. Always replace worn or damaged parts and assemblies with genuine Winntec parts and assemblies.

6. Inspect the jack before each use. Do not use if bent, broken or cracked components are noted.

OPERATION

Lifting

1. Assemble the 2-piece handle and the handle protector.
2. Secure the load to prevent inadvertent shifting and movement.
3. Position the jack under the desired lifting point.
4. Close the release valve by turning it clockwise until tight.

CAUTION : Use the handle provided with this product or an authorized replacement handle to ensure proper release valve operation. **DO NOT** use an extension to the operating handle. When use to lift the vehicle, lift only on the manufacturer's recommended lifting point and in accordance with the published guidelines in your vehicle owner's manual. Always use jack stands to support the load immediately after lifting.

5. Insert and secure the handle into the handle fork. Pump the handle until the saddle reach the load.
6. Raise the load to the desired height, then immediately transfer the load to properly rated support devices such as jack stands.

WARNING

This is a lifting device only. It is designed to lift a part of a vehicle (a wheel or axle). Always wear safety glasses when using this equipment. Center the load on the saddle before lifting. Never work on, under, or around the load until it is properly supported. Transfer the load immediately to appropriately rated jack stands. DO NOT use this product for any purpose other than that it is designed for. It is owner's responsibility to keep labels and instructional materials legible and available. Replacement labels and manuals are available from the manufacturer. Failure to heed these and all other warnings retaining to this product can result in sudden loss of lifted load resulting in death, personal injury or property damages.

Lowering

1. Raise the load properly to carefully remove jack stands.
2. Release the release valve by turning it counter-clockwise, but no more than 1/2 turn.

WARNING

Be sure that all tools and personnel are clear before lowering the load. Dangerous dynamic shock loads are created by quickly opening and closing the release valve when the load is being lowered. The resulting overloading may cause failure of the hydraulic system, resulting in severe personal injury and/or property damage.

3. After removing the jack from under the load, set the saddle to its lowest height and make the handle socket down to eliminate exposure to rust and contamination.

MAINTENANCE

Importance: Use only good grade hydraulic jack oil. NEVER mixing different types of fluid and NEVER use brake fluid, turbine oil, transmission fluid, motor oil or glycerin. Improper fluid can cause premature failure of the jack and sudden and immediate loss of load.

Adding Oil

1. With the saddle fully lowered and the pump piston fully retracted, and open the filler plug.
2. Fill until the oil level is around 0.2" below the oil filling hole. Reinstall the oil filler plug.

Changing Oil

For the best performance and longest life, replace complete oil at least once a year.

1. With the saddle fully lowered and the pump piston fully retracted. Unscrew the cover and remove the oil filler plug.
2. Lay the jack on its side and drain the fluid into a suitable container.

Note: Dispose of hydraulic fluid in accordance with local regulations.

3. Fill with good grade jack oil. Reinstall the oil filler plug, and fasten the cover. It is strongly recommended to use Mobil DTE 13, OK Delta 10, or equivalent.

Lubrication

1. A light coating of lubricant to pivot points, axles and hinges will help to prevent rust and assure wheels, castors and pump assemblies to move smoothly.
2. Periodically check the pump piston and the ram for signs of rust or corrosion. Clean as needed and wipe with oil cloth.

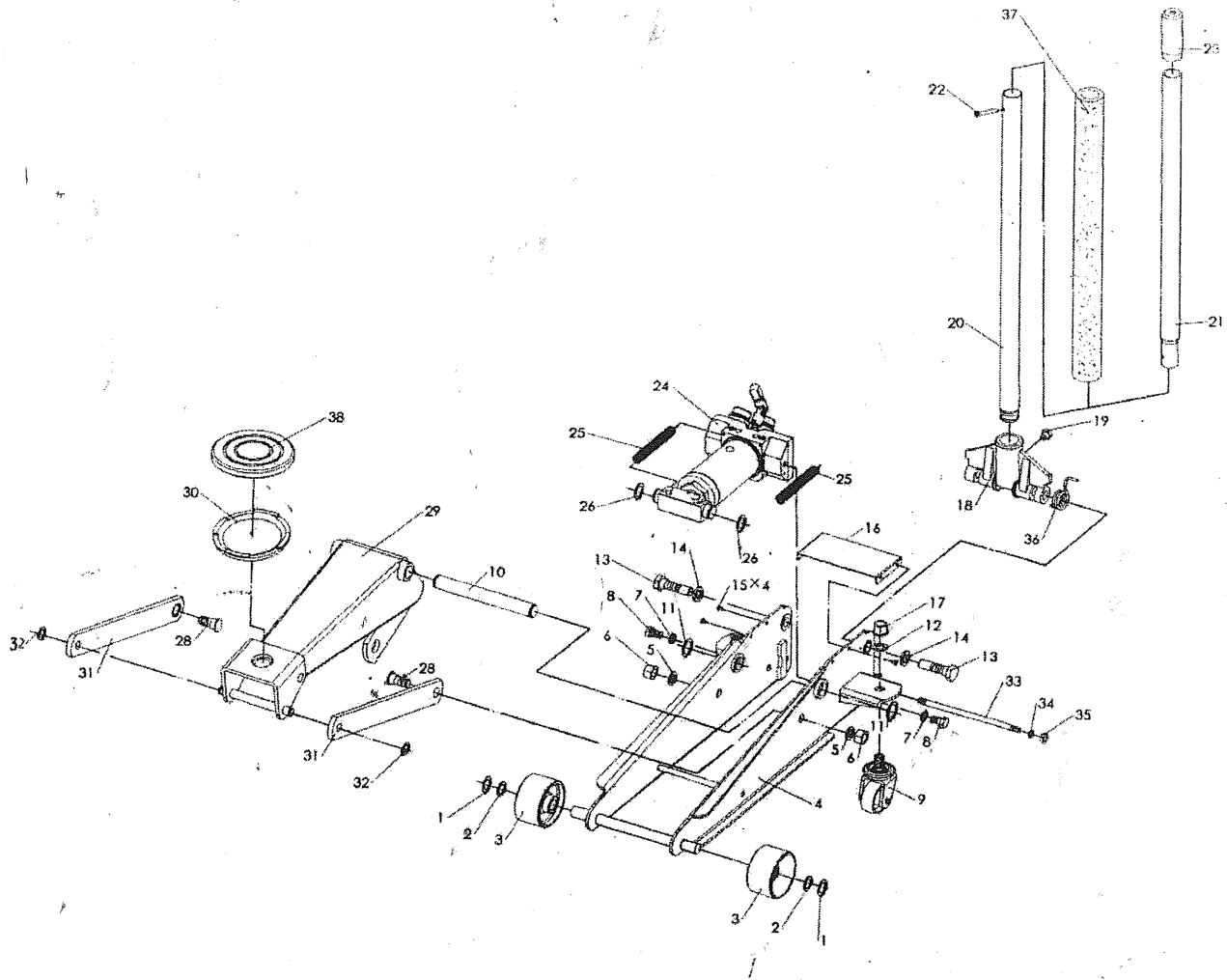
NEVER apply any sandpaper or abrasive material to the jack.

3. When not in use, store the jack with the pump piston and the ram fully retracted.

TROUBLE SHOOTING

Symptom	Causes	Remedy
Jack will not lift the load.	<ol style="list-style-type: none"> 1. The release valve is not tightly closed. 2. The jack is overloaded. 	<ol style="list-style-type: none"> 1. Tighten the release valve. 2. Rectify the overload condition.
Jack bleeds off after lifting.	<ol style="list-style-type: none"> 1. The release valve is not tightly closed. 2. The jack is overloaded. 3. The hydraulic unit malfunctions. 	<ol style="list-style-type: none"> 1. Tighten the release valve. 2. Rectify the overload condition. 3. Contact the local service center.
Jack will not lower after unloading.	<ol style="list-style-type: none"> 1. The reservoir is overfilled with hydraulic fluid. 2. Linkage binding. 	<ol style="list-style-type: none"> 1. Drain fluid to the proper oil level. 2. Clean and lubricate moving parts.
Poor lifting performance.	<ol style="list-style-type: none"> 1. Low fluid level. 2. Air is trapped inside the hydraulic system. 	<ol style="list-style-type: none"> 1. Ensure proper fluid level. 2. With the ram retracted, remove the oil filler plug. Pump the jack with the release valve open to pressurize the air. Reinstall the oil filler plug.
The jack will not lift to its maximum height.	Low fluid level.	Ensure proper fluid level.

Spare Part List



Y420303

Pos.	Art. Nummer	Omschrijving	Pos.	Art. Nummer	Omschrijving
1	Y420303-1	Retaining ring	20	Y420303-20	Lower Handle
2	Y420303-2	Washer	21	Y420303-21	Upper Handle
3	Y420303-3	Wheel	22	Y420303-22	Bolt M6x35
4	Y420303-4	Side Plate Assy.	23	Y420303-23	Top Cover
5	Y420303-5	Washer	24	Y420303-24	Power unit assy
6	Y420303-6	Nut M16	25	Y420303-25	Spring
7	Y420303-7	Spring Washer	26	Y420303-26	Retaining Ring
8	Y420303-8	Bolt M12x20	27	Y420303-27	Block linkage
9	Y420303-9	Rear Caster Assy.	28	Y420303-28	Bolt
10	Y420303-10	Shaft Arm	29	Y420303-29	Lifting Arm
11	Y420303-11	Retaining ring	30	Y420303-30	Saddle
12	Y420303-12	Spring Washer	31	Y420303-31	Long Linkage
13	Y420303-13	Bolt	32	Y420303-32	Retaining Ring
14	Y420303-14	Spring washer	33	Y420303-33	Pull Rod
15	Y420303-15	Spring washer	34	Y420303-34	Washer
16	Y420303-16	Cover	35	Y420303-35	Nut M12
17	Y420303-17	Nut M16	36	Y420303-36	Torsion Spring
18	Y420303-18	Handle Socket			
19	Y420303-19	Bolt	RK	Y420303-RK	Repair kit