

# SURE SHOT® SPRAYERS

## INSTRUCTIONS

Refillable, reusable. Extra versatile.  
Pressurized by free air



	TOP LOAD WITH LIGHT LIQUIDS	PRESSURIZE WITH AIR CHUCK	SPRAY ANYWHERE
<b>MODEL A</b> 32 OZ.			

### DIRECTIONS FOR OPERATING MODEL “A” SPRAYERS

1) **ALWAYS DEPRESSURIZE SPRAYER BEFORE REMOVING ANY PARTS.** The pressure may be let out of the sprayer one of the two following ways:

a) Tip the sprayer upside down and depress the trigger until no pressure is left. If some liquid is left in the sprayer when you attempt this procedure make sure you aim the nozzle at a place where a little bit of liquid can be expelled.

b) Remove #122 black cap from filler cap and use small probe to depress #121 valve core until all the pressure escapes. **NOTE:** Make sure the sprayer is upright and the filler cap stem is pointing away from you when depressing the valve core.

2) Remove the 15/16” hex filler cap once all the air has been let out of the sprayer.

3) Fill sprayer 2/3 full (32 ounce maximum liquid capacity) with light, clean liquid. Make sure the liquid you are putting into the sprayer is **CLEAN** and **FREE OF FOREIGN PARTICLES**. See **ACCESSORIES** on page 4 for liquid filling/measuring device.

**NOTE: ALWAYS CHECK WITH YOUR CHEMICAL SUPPLIER IF YOU ARE NOT SURE OF COMPATIBILITY. READ CAUTION LABEL ON SPRAYER BEFORE FILLING.**

**NEVER USE ACIDS IN ANY SURE SHOT SPRAYER.**

5) Charge sprayer with compressed air by holding standard air chuck on valve stem of the filler cap. Hold the air chuck on the filler cap until you hear the line pressure equalize with the sprayer. Working pressure is 80-150 psi. At least 80 psi is needed to spray the full 32 oz. without a recharge of air. **THE MAXIMUM PRESSURE SHOULD NOT EXCEED 200 PSI.**

6) The Model “A” sprayer is now ready to use.

7) For best results, the liquid to be sprayed should be lighter than a No. 10 motor oil. (If liquid is too heavy a pin stream will result). **DILUTE WITH A SUITABLE DILUENT UNTIL DESIRED SPRAY IS OBTAINED.**

**CAUTION:** Never point the nozzle of sprayer toward yourself or another person. Always point the nozzle of the sprayer away from yourself and toward your intended target before depressing the trigger.

**PLEASE NOTE:** NOZZLE IN THE OPERATING POSITION IS SET FOR REGULAR MIST. FOR PIN STREAM, REMOVE THE #303 SPIRAL WITH NEEDLE NOSE PLIERS.

THE #118 FILLER CAP NOW COMES WITH A SPECIAL CHEMICAL RESISTANT VALVE CORE AND USES A REGULAR **RIGHT HAND** THREAD.

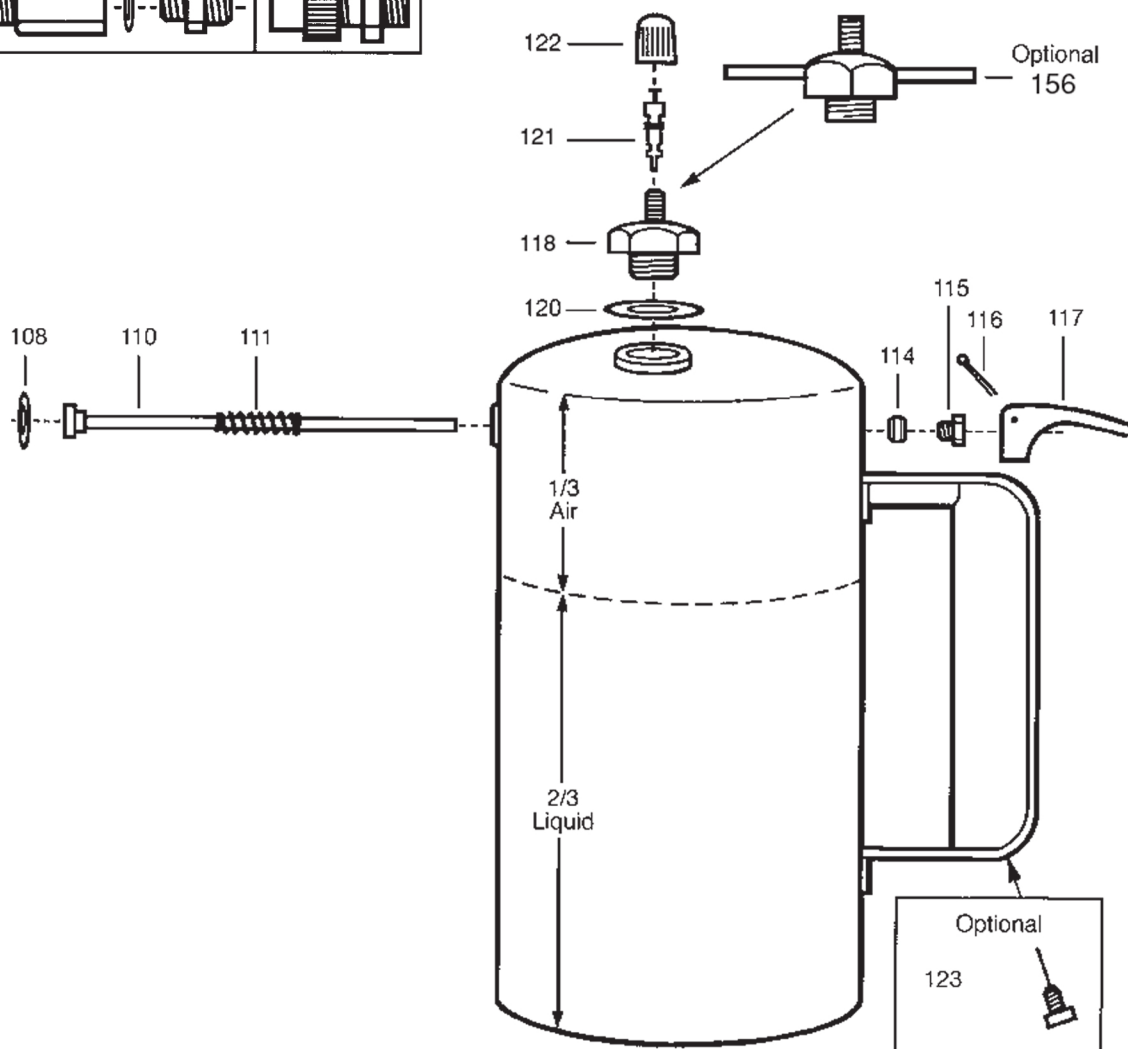
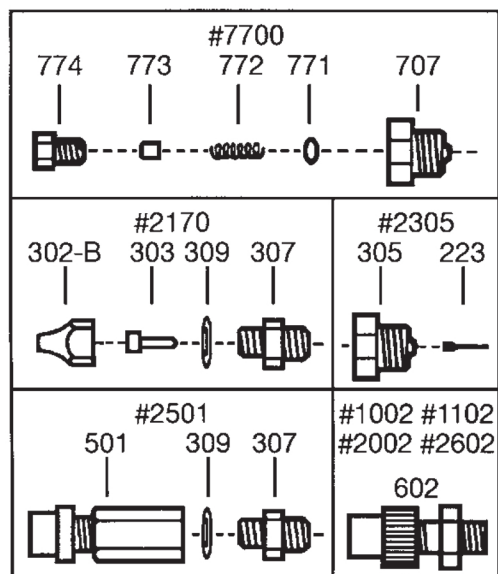
4) Replace 15/16” hex filler cap and tighten.

**ALWAYS DEPRESSURIZE THE SPRAYER BEFORE REMOVING ANY PARTS**  
**SPRAYER NOT RECOMMENDED FOR USE WITH PAINTS**  
**MAXIMUM PRESSURE 200 PSI**

# MODEL A

#1002 - #1102 - #2002 - #2170

#2305 - #2501 - #2602 - #7700



<b>PART #</b>	<b>DESCRIPTION</b>
108	Inner Adaptor Washer
110	Valve
111	Valve Spring
114	Stuffing Box Packing
115	Stuffing Box Nut
116	Cotter Pin
117	Valve Trigger
118	Filler Cap Assembly (incl. 120, 121FFKM, 122)
120	Filler Cap Gasket
121FFKM	Perfluroelastomer Valve Core Exceptional Chemical Resistance
122	Black Cap
123	Clean Out Pick
*156	Filler Cap Assembly Includes 120, 121FFKM, 122 (Right Hand Thread)
223	Spray Jet Spiral (for 305)
302	Regular Spray Nozzle (incl. 303)  Remove #303 with needle nose pliers to produce pin stream.
302-B	Coarse Spray Nozzle (incl. 303)
302-C	Extra Fine Spray Nozzle (incl. 303)
303	Spray Jet Spiral (for 302, 302-B, 302-C)
305	Fine Spray Nozzle (incl. 223)
307	Valve Seat Adaptor - Male
***307-C	Valve Seat Adaptor - Female 1/8" NPT
***307 PT	Valve Seat Adaptor - Male 1/8" NPT
309	Outer Adaptor Washer
451	Piercing Pin Assembly
452	Bulb Neck Washer

<b>PART #</b>	<b>DESCRIPTION</b>
453	Retaining Ring
456	Bulb Holder
460	Relief Valve - Complete
501	Flat Spray Nozzle
550	Flat Spray Nozzle with 307-C Adaptor
567	Coarse Flat Spray Nozzle with 307-C Adaptor
602	Plastic Adjustable Nozzle with Adaptor
707	Extra, Extra Fine Spray Nozzle
771	Packing for 707 Nozzle
772	Spring for 707 Nozzle
773	Spiral for 707 Nozzle
774	Insert for 707 Nozzle
* The #156 filler cap assembly enables you to tighten without a wrench. Just hand tighten using the pins protruding from the 15/16" hex. Use the same valve Core (#121FFKM) as the #118. Right Hand Thread.	
*** The #307-C and #307 PT can be used in place of the #307 adaptor when the need to adapt to pipe thread fittings is necessary.	

### **EXTENSIONS**

304	Nozzle Extension Washer (for 325 & 335)
320	3" Extension with Sprayhead
325	6" Nozzle Extension - Rigid Brass (for 302/302B/302C/501)
330	12" Nozzle Extension - Long Flexible Teflon® Tube (for 301/302/302B/302C/501)
331	12" Nozzle Extension - Long Flexible Teflon® Tube (for 305/550/567/602/707)
338	6" Nozzle Extension - Rigid Brass (for 305/550/567/602/707)
335	12" Nozzle Extension - Flexible Brass (for 302/302B/302C/501)
339	12" Nozzle Extension - Flexible Brass (for 305/550/567/602/707)
337	12" Plastic Pin Stream Extension
344	3" Long Hypodermic Tube Extension
345	3" Extension with Pin Stream Head